



Bridgelux® Solderless Holder

Product Data Sheet DS1340-1

Introduction



Bridgelux Solderless Holder Assemblies provide ultimate convenience for simple and reliable solderless connections to Bridgelux's LED Arrays.

Bridgelux Solderless Holder is a revolutionary light source system that integrates Bridgelux's V series COB technology with poke-in connectivity enabling solder-free installation. Bridgelux Solderless Holder and LED light sources streamline assembly processes, lower manufacturing cost, simplify luminaire design, improve light quality and increase design flexibility.

The harness system provides fast and solderless connections to V series LED arrays which greatly improves production throughput and minimizes possible connection related defect and damage.

Features

- Vertical snap-to-mate connection
- Positive-lock latching feature
- Gold-plated contacts
- Halogen-free UL94V-0

Benefits

- Minimizes handling of arrays during installation, greatly reducing the possibility of damage.
- Enables a fast, easy and reliable holder to the LED array
- Provides a slim design for space-limited applications. Minimizes risk of affecting light output
- Highly reliable, low contact resistance
- Meets RoHS requirements and is UL-flammability rated
- Provides design flexibility

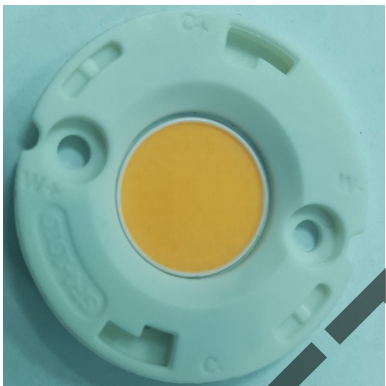
Contents

| | |
|-------------------------|----|
| Product Feature Map | 2 |
| Product Nomenclature | 2 |
| Product Selection Guide | 3 |
| Mechanical Dimensions | 4 |
| Design Resources | 10 |
| Disclaimers | 10 |
| About Bridgelux | 11 |

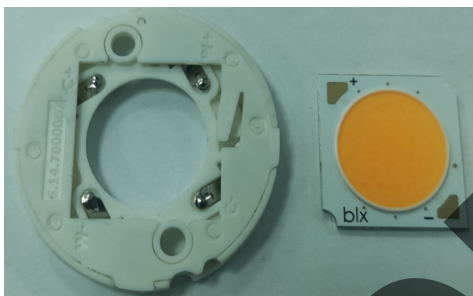
DRAFT

Product Feature Map

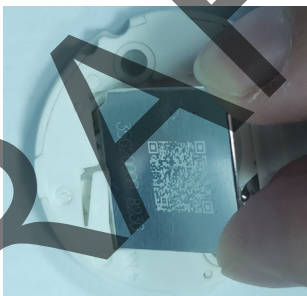
Bridgelux Solderless Holder is available for six different COB sizes—BXHD-1212, BXHD-1313, BXHD-1616, BXHD-1919, BXHD-2424 and BXHD-2828 includes several features to simplify the design integration and manufacturing process.



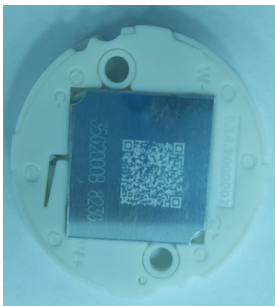
Easy Two-Step Assembly Process



Step 1. Check the positive contact.



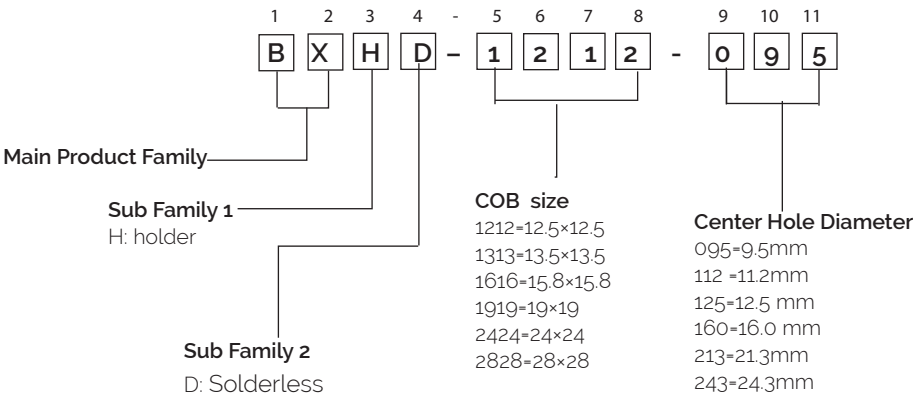
Step 2. Align the gap and push straight down to holder



Completed Array and holder (shown backside)

Product Nomenclature

The part number designation for Bridgelux Solderless Holder Assemblies is explained as follows.



Product Selection Guide

The following product configurations are available:

Table 1: Selection Guide

| Bridgelux Part Number | Array Size (mm x mm) | Center Hole Diameter (mm) | Bridgelux arrays |
|-----------------------|----------------------|---------------------------|---------------------------|
| BXHD-1212-095 | 12.5 x 12.5 | 9.5 | V6,V8,V3HD,V4HD,Vesta TW6 |
| BXHD-1313-112 | 13.5 x 13.5 | 11.2 | V10,V6HD |
| BXHD-1616-125 | 15.8 x 15.8 | 12.5 | Vesta TW9 |
| BXHD-1919-160 | 19 x 19 | 16.0 | V13,V9HD ,Vesta TW13 |
| BXHD-2424-213 | 24 x 24 | 21.3 | V18,Vesta TW18 |
| BXHD-2828-243 | 28 x 28 | 24.3 | V22,Vesta TW22 |

Notes for Table 1:

1. Additional holder designs can be requested. Consult sales for more information.

Table 2: List of suitable conductor types, wire sizes and maximum insulation diameter

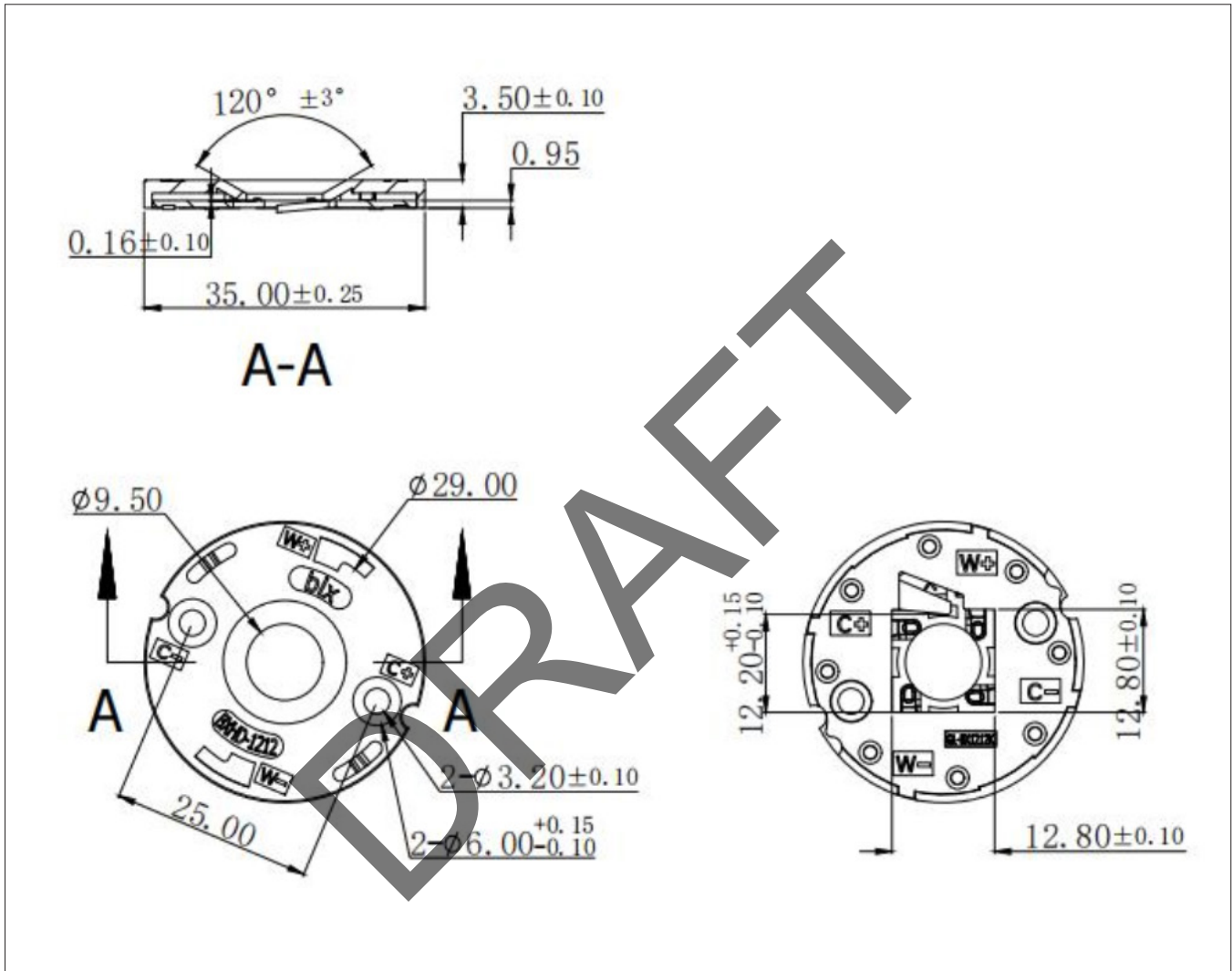
| Conductor Type | Wire Size | Insulation Diameter (mm) |
|---------------------------------------|---------------------|--------------------------|
| Solid,Stranded and tinned,or Stranded | AWG22 | 2.1mm maximum |
| | AWG20 | |
| | AWG18 | |
| | 0.34mm ² | |
| | 0.50mm ² | |
| | 0.75mm ² | |

Notes for Table 2:

1. Additional holder designs can be requested. Consult Sales for more information

Mechanical Dimensions

Figure 1: Drawing for BXHD-1212 holder

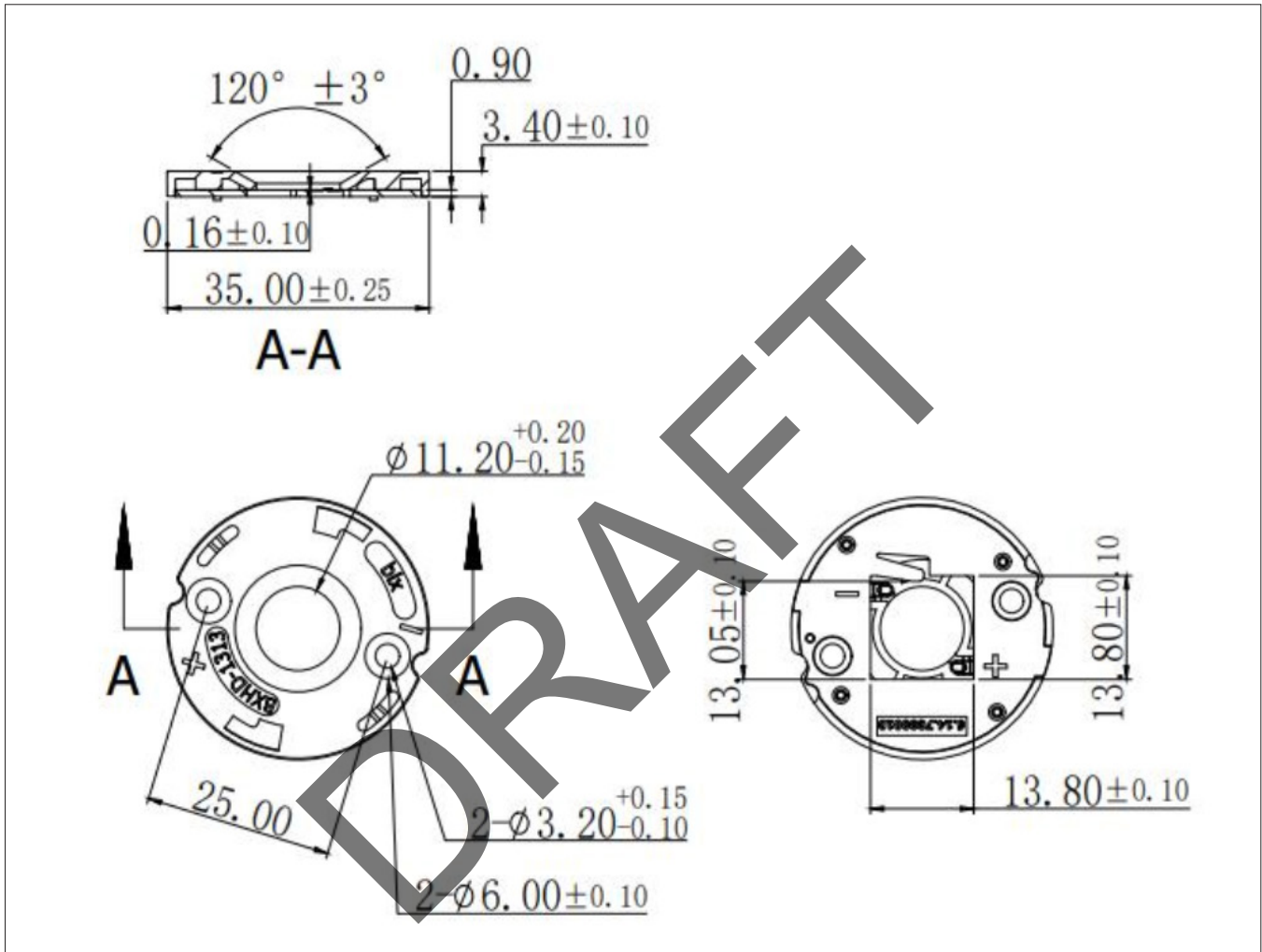


Notes for Figure 1:

1. Drawings are not to scale.
2. Drawing dimensions are in millimeters.
3. Unless otherwise specified, tolerances are ± 0.15 mm.
4. Contact pad labeled "+" denotes positive contact.
5. Bridgelux maintains a flatness of 0.10mm across the mounting surface of the array.

Mechanical Dimensions

Figure 2: Drawing for BXHD-1313 holder

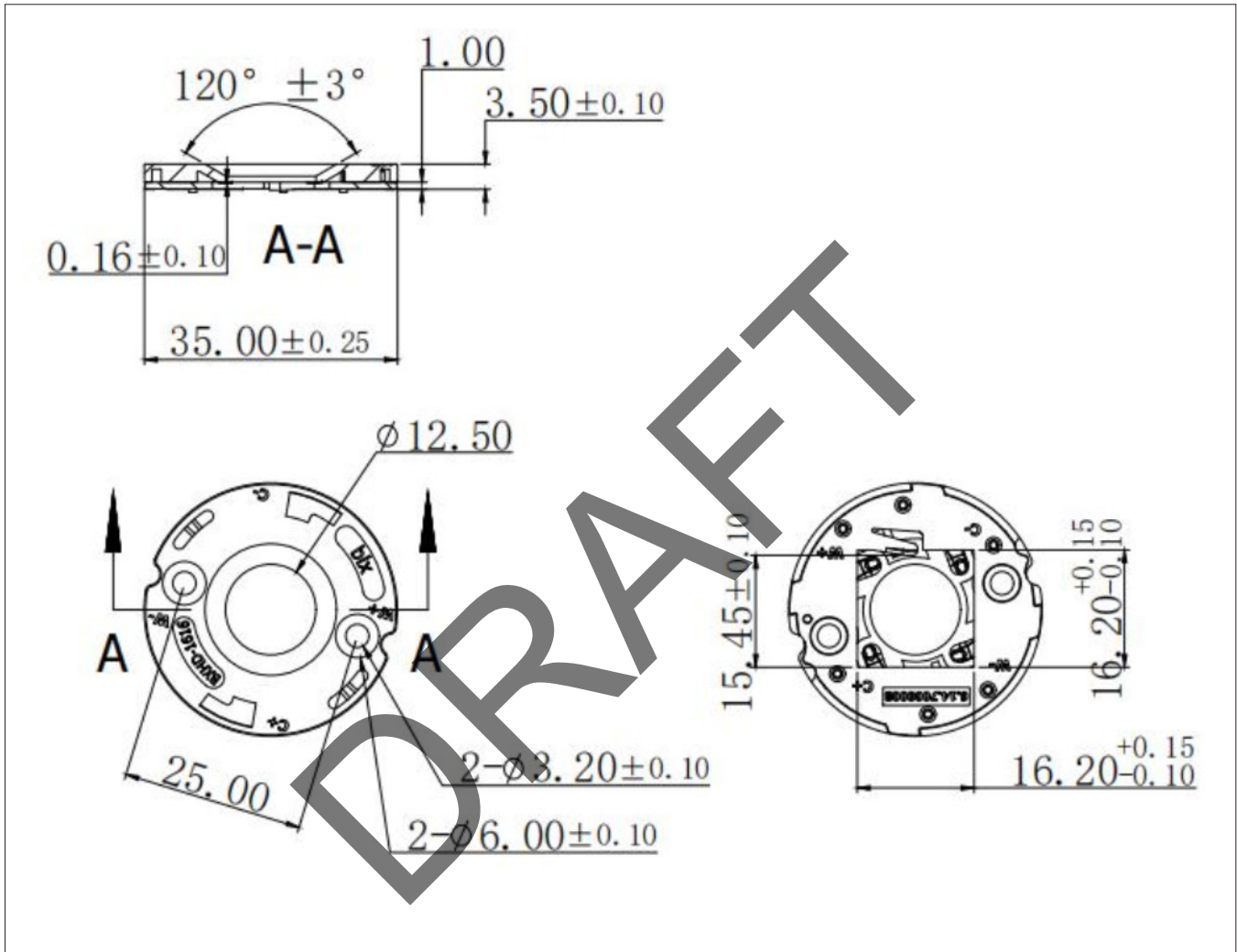


Notes for Figure 2:

1. Drawings are not to scale.
2. Drawing dimensions are in millimeters.
3. Unless otherwise specified, tolerances are ± 0.15 mm.
4. Contact pad labeled "+" denotes positive contact.
5. Bridgelux maintains a flatness of 0.10mm across the mounting surface of the array.

Mechanical Dimensions

Figure 3: Drawing for BXHD-1616 holder

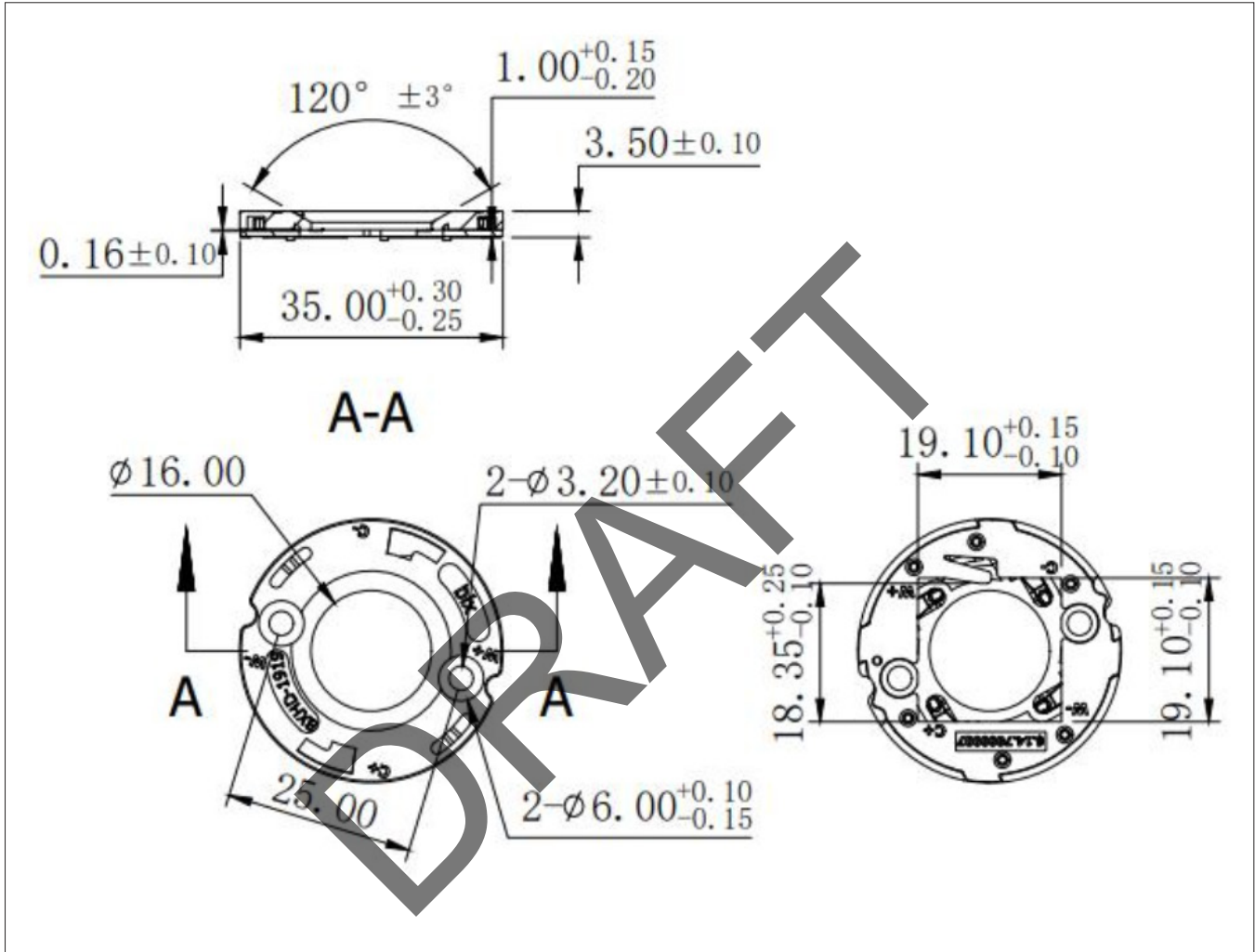


Notes for Figure 3:

1. Drawings are not to scale.
2. Drawing dimensions are in millimeters.
3. Unless otherwise specified, tolerances are ± 0.15 mm.
4. Contact pad labeled "+" denotes positive contact.
5. Bridgelux maintains a flatness of 0.10mm across the mounting surface of the array.

Mechanical Dimensions

Figure 4: Drawing for BXHD-1919 holder

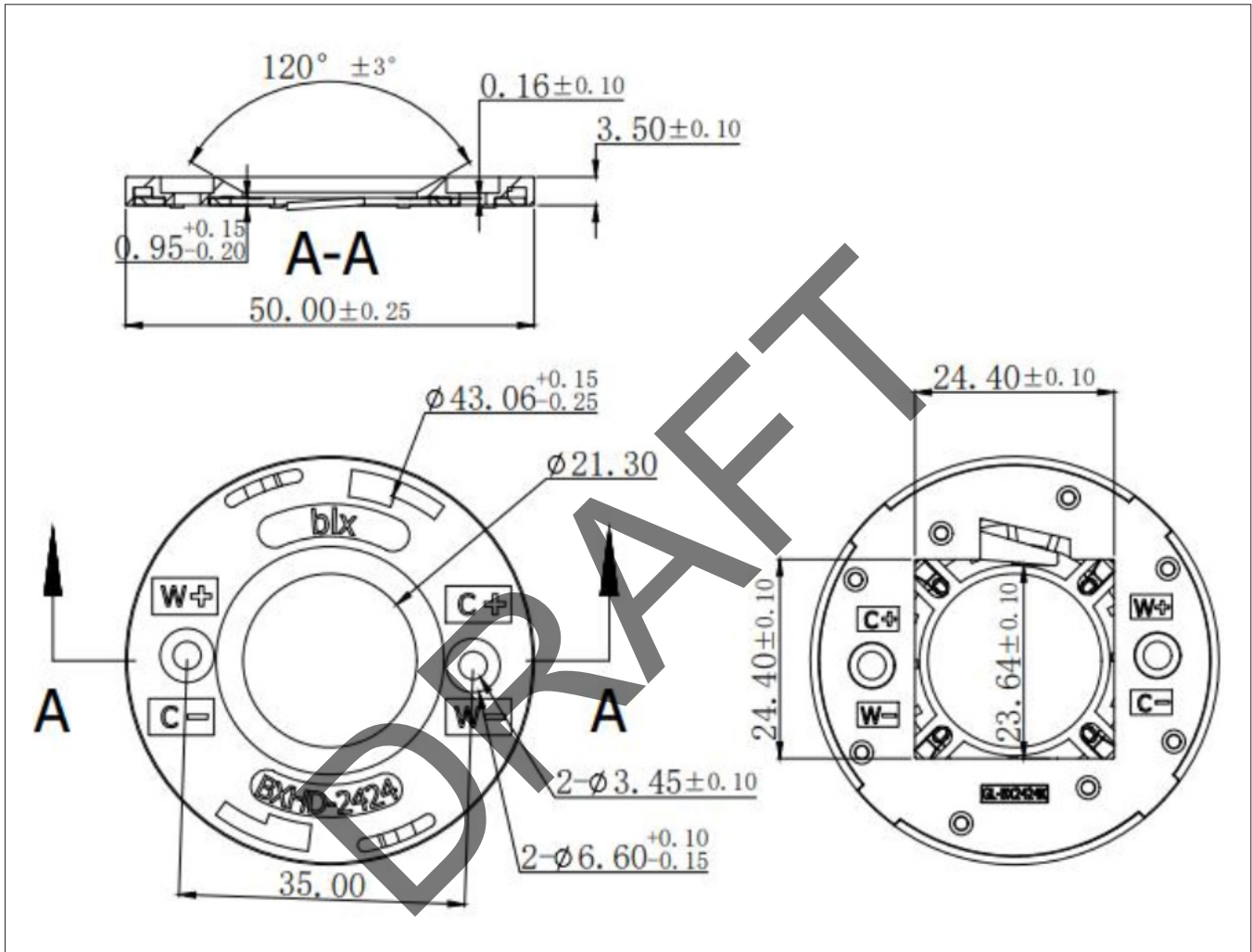


Notes for Figure 4:

1. Drawings are not to scale.
2. Drawing dimensions are in millimeters.
3. Unless otherwise specified, tolerances are ± 0.15 mm.
4. Contact pad labeled "*" denotes positive contact.
5. Bridgelux maintains a flatness of 0.10mm across the mounting surface of the array.

Mechanical Dimensions

Figure 5: Drawing for BXHD-2424 holder

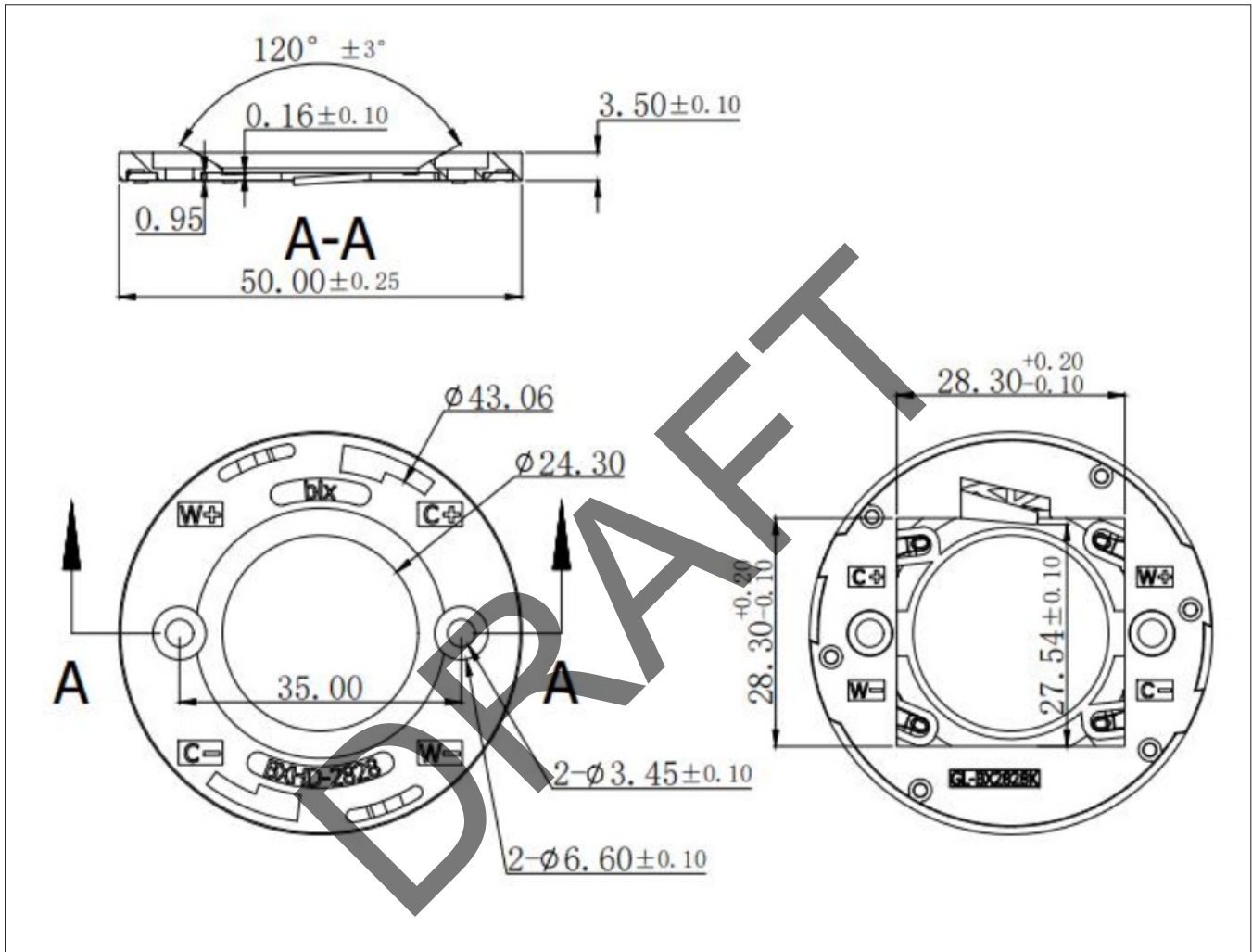


Notes for Figure 5:

1. Drawings are not to scale.
2. Drawing dimensions are in millimeters.
3. Unless otherwise specified, tolerances are ± 0.15 mm.
4. Contact pad labeled "+" denotes positive contact.
5. Bridgelux maintains a flatness of 0.10mm across the mounting surface of the array.

Mechanical Dimensions

Figure 6: Drawing for BXHD-2828 holder



Notes for Figure 6:

1. Drawings are not to scale.
2. Drawing dimensions are in millimeters.
3. Unless otherwise specified, tolerances are ± 0.15 mm.
4. Contact pad labeled "+" denotes positive contact.
5. Bridgelux maintains a flatness of 0.10mm across the mounting surface of the array.

Design Resources

Application Notes

Bridgelux has developed a comprehensive set of application notes and design resources to assist customers in successfully designing with the V series product family of LED array products. For all available application notes visit www.bridgelux.com.

Disclaimers

MINOR PRODUCT CHANGE POLICY

The rigorous qualification testing on products offered by Bridgelux provides performance assurance. Slight cosmetic changes that do not affect form, fit, or function may occur as Bridgelux continues product optimization.

DRAFT

About Bridgelux: Bridging Light and Life™

At Bridgelux, we help companies, industries and people experience the power and possibility of light. Since 2002, we've designed LED solutions that are high performing, energy efficient, cost effective and easy to integrate. Our focus is on light's impact on human behavior, delivering products that create better environments, experiences and returns—both experiential and financial. And our patented technology drives new platforms for commercial and industrial luminaires.

For more information about the company, please visit
bridgelux.com
twitter.com/Bridgelux
facebook.com/Bridgelux
youtube.com/user/Bridgelux
linkedin.com/company/bridgelux-inc-_2
WeChat ID: BridgeluxInChina



46410 Fremont Boulevard
Fremont, CA 94538 U.S.A.
Tel (925) 583-8400
www.bridgelux.com